

# Assembly Manual

Model No.  
ROLHAN18

- Assembly
- Parts Explosion
- Replacement  
Parts
- Operation
- Maintenance
- Proper Storage
- Warranty



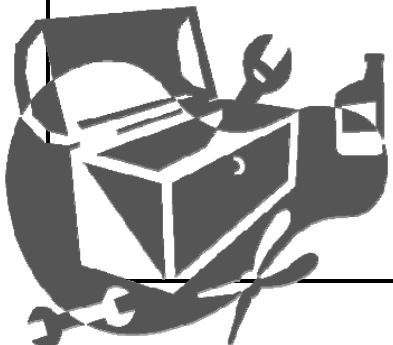
## Hand Roller 18" X 24"





Thank you for choosing Har-Tru  
brand products.

# Table of Contents

Assembly	
Tools Needed _____	3
Parts Identification _____	4
Assembly Instructions _____	5
Parts Explosion	
Assembly Packages _____	6
Product Replacement Parts _____	7
Parts Replacement Instructions _____	8
Product Operation _____	8
Products Safety _____	9
Product Specification _____	9
Proper Storage _____	9
Maintenance _____	10
Warranty _____	10
Support Contact _____	10

# Tools Needed



	1	#4 Allen Wrench
	1	Needle Nose Pliers
	2	1/2" Open or Closed Wrench
	1	Adjustable Wrench

# Assembly

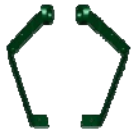
Before you begin:

## Parts Identification:



HRC01SO

Scrapers Bar (2)



HRC02SO

Universal Arms (3)



HRC03SO

Handle w/grips (5)



HRC04SO

Handle Bracket (7)



HRC09SO

18" X 24" Roller (8)

### Hardware Package includes:

- 2 Handle Grips Black (9)
- 2 5/16" X 1-1/2" Hex Head Cap Screw (10)
- 2 5/16" X 2" Hex Head Cap Screw (11)
- 4 5/16" Flat Washer (12)
- 2 5/16" Hex Nut (13)
- 2 5/16" Lock Washer (14)
- 2 5/16" Elastic Stop Nut (15)
- 2 2" Extension Springs (17)
- 2 Cotter Pin (17)
- 2 1" Set Collar (18)
- 1 1-1/4" Brass Plug Square Head (19)

Important: Please make sure you have all the parts before assembling.

# Assembly Instructions

**Step 1**

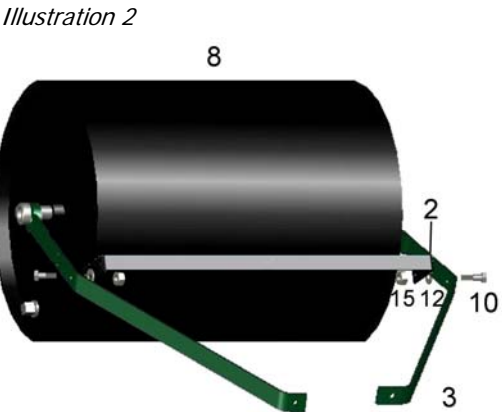
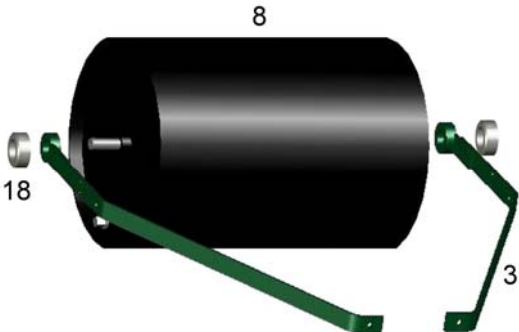
Place the 18"X24" roll (8) in a flat area. This will limit movement as you install the Handle. Attach the Universal Handle Arms (3) by sliding them onto the axle.

Note: Both Arms are interchangeable and can be used as left or right.

Next, slide the set collar (18) onto axle and repeat for the other side. Do not tighten collars to the axle at this point.

*See Illustration 1*

*Illustration 1*



**Step 2**

Attach the Scraper Bar (2) by inserting a 5/16" x 1-1/2" Hex Head Cap Screw (10) into the Handle Arm (3) and through the Scraper Bar (2). Make sure a 5/16" Flat washer (12) is placed in between the Handle Arm (3) and the Scraper Bar (2). Then insert a 5/16" Stop nut (15) onto the bolt. Repeat this Process on the other side.

**Note: Hand tighten only.**

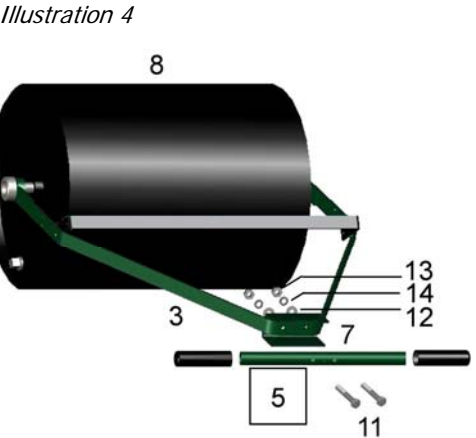
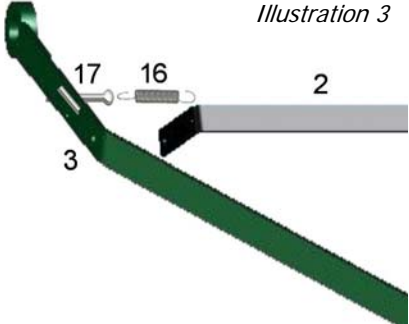
*See Illustration 2*

**Step 3**

Insert the Cotter Pin (17) into the top hole in the Handle Arm (3) with the loop on the inside. Then bend the ends over to hold in place. Insert one end of the Extension Spring (16) into the Cotter Pin (17) and the other end into the drilled hole in the Scraper Bar (2). Repeat this step for the other side.

*See Illustration 3*

*Illustration 3*



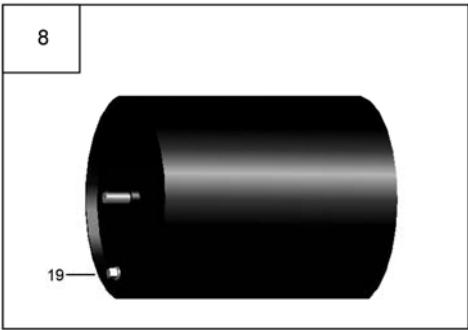
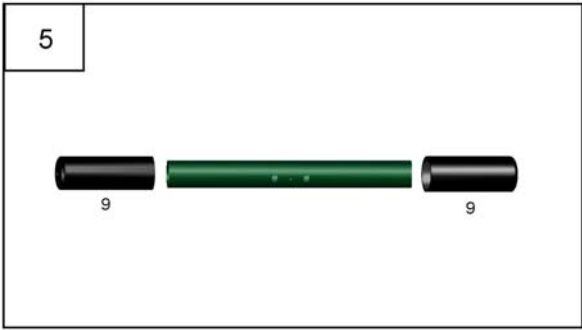
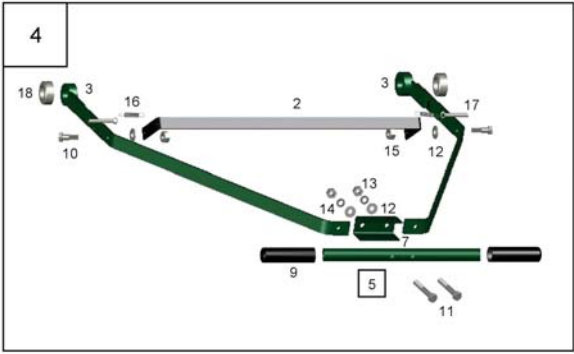
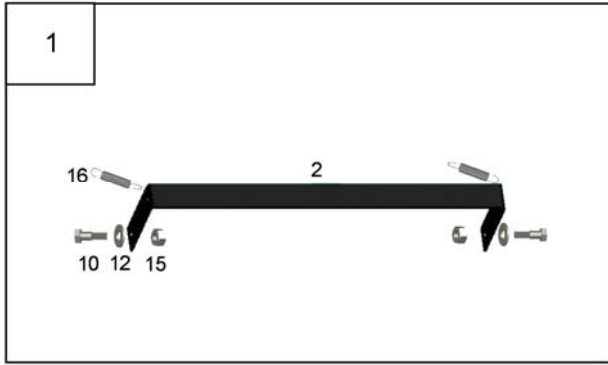
**Step 4**

Attach the Handle Bar Bracket (7) by pulling the Handle Arms (3) inward together. The Handle Bracket (7) will be installed from the inside, pulling together the two Handle Arms (3) while attaching the handle (5). Use 2, 5/16" X 2" Hex Head Cap Screws (11); two 5/16" Flat Washers (12); two 5/16" Lock Washer (14); and two 5/16" Hex Nuts (13).

**Note: Once frame and handle are attached, tighten all hardware and Set Collars.**

*See Illustration 4*

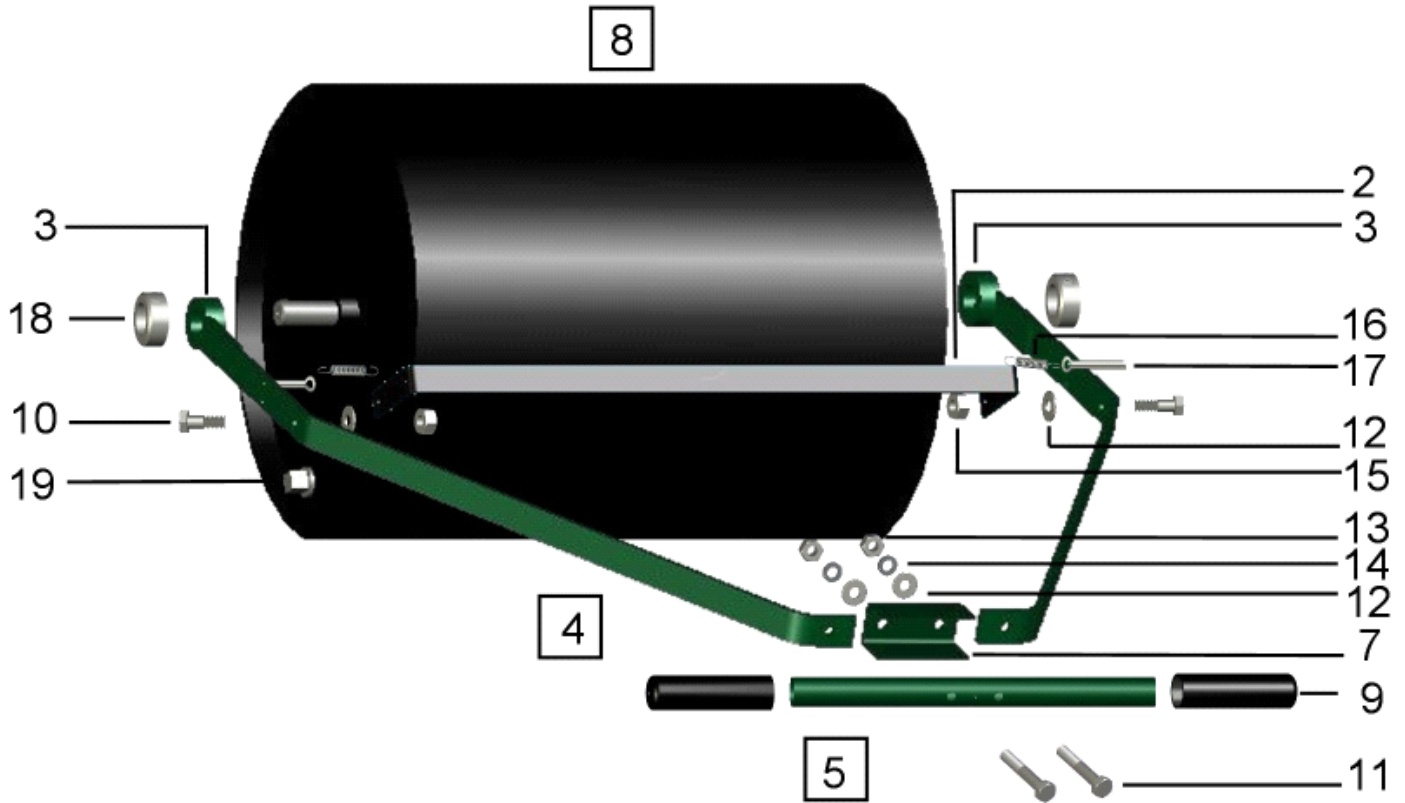
# Assembly Packages



Ref No.	Part Number	Description	QTY
<b>1</b>	<b>1824H-SB-COMP</b>	<b>Scraper Bar Assembly Complete</b>	<b>1</b>
	1824H-18/SB-A	1 Scraper Bar only (2)	
	FAS-5/16X1-1/2H	2 5/16" X 1-1/2" Cap Screw (10)	
	FAS-5/16FWASH	2 5/16" Flat Washer (12)	
	FAS-5/16SNUT	2 5/16" Elastic Stop Nut (15)	
	LM-EX/SPRING	2 2" Extension Spring Stainless Steel (16)	
<b>4</b>	<b>1824H/F18-A</b>	<b>Hand Roller Frame Assembly</b>	<b>1</b>
	1824H-18/SB-A	1 Scraper Bar Only (2)	
	1824H-ARM	2 Universal Arm (3)	
	1824HB-A	1 Handle Bracket (7)	
	DB-HANDLE/GRIP	2 Handle Grip Black (9)	
	FAS-5/16X1-1/2H	2 5/16" X 1-1/2" Hex Head Cap Screw (10)	
	FAS-5/16X2-H	2 5/16" X 2" Hex Head Cap Screw (11)	
	FAS-5/16FWASH	4 5/16" Flat Washer (12)	
	FAS-5/16HNUT	2 5/16" Hex Nut (13)	
	FAS-5/16LWASH	2 5/16" Lock Washer (14)	
	FAS-5/16SNut	2 5/16" Elastic Stop Nut (15)	
	LM-EX/SPRING	2 2" Extension Spring Stainless Steel (16)	
	LS-COTTER/KEY	2 Cotter Pin Stainless Steel (17)	
	TR-1-SET/COLLAR	2 1" Set Collar (18)	
<b>5</b>	<b>1824H-HANDLE-C</b>	<b>Handle Bar with Grips</b>	<b>1</b>
	DB-HANDLE/GRIP	2 Handle Grip Black (9)	
<b>8</b>	<b>1824H/R-A</b>	<b>Roller 18" X 24" w/ Brass Plug</b>	<b>1</b>
	TR-BRASS/PLUG-2	1 1-1/4" Square Head Brass Plug (19)	

# Replacement Parts

Illustration 5



Ref No.	Part Number	Description	QTY
2	1824H-18/SB-A	Scraper Bar Only	1
3	1824H-ARM	Universal Arm	2
7	1824HB-A	Handle Bracket	1
9	DB-HANDLE/GRIP	Handle Grip Black	2
10	FAS-5/16X1-1/2H	5/16" X 1-1/2" Cap Screw	2
11	FAS-5/16X2-H	5/16" X 2" Cap Screw	2
12	FAS-5/16FWASH	5/16" Flat Washer	4
13	FAS-5/16HNUT	5/16" Hex Nut	2
14	FAS-5/16LWASH	5/16" Lock Washer	2
15	FAS-5/16SNUT	5/16" Elastic Stop Nut	2
16	LM-EX/SPRING	2" Extension Spring Stainless Steel	2
17	LS-COTTER/KEY	Cotter Pin Stainless Steel	2
18	TR-1-SET/COLLAR	1" Set Collar	2
19	TR-BRASS/PLUG-2	1-1/4" Square Head Brass Plug	1

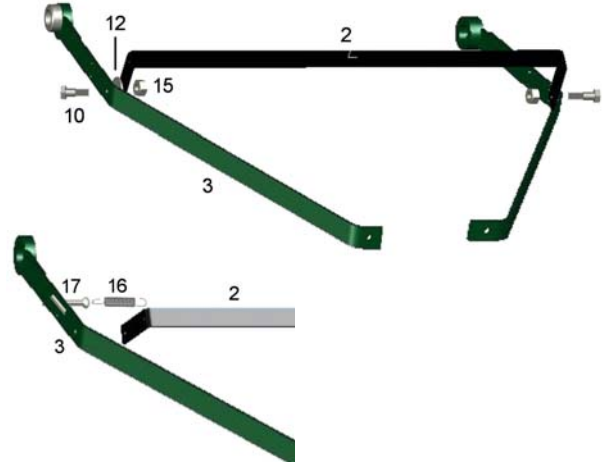
# Replacement Instructions

## Replace Scraper Bar

The Scraper Bar will need to be replaced once it is worn and no longer removes tennis court surface from the roll. Replace by removing the 5/16" X 1-1/2" Bolt (10) from both the Right & Left Arms (3) by removing the 5/16" Stop Nuts (15) from each end. Disconnect the Extension Springs (16) on both sides then remove the old Scraper Bar. Attach the new scraper bar (2) by inserting the 5/16" X 1-1/2" Hex Head Cap Screw (10) to each side, making sure that the 5/16" Flat Washer (12) is placed between the Handle Arm(3) & and the Scraper Bar (2). Replace the 5/16" Stop Nuts (15). Re-attach the Extension Springs (16) on both sides of the Scraper Bar. Make sure Scraper Bar springs up and down for consistent surface removal.

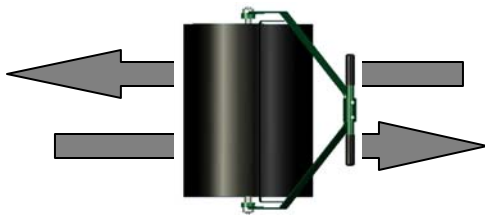
*See Illustration 6*

*Illustration 6*



# Operation

*Illustration 7*



## Rolling Pattern

The 18" X 24" Hand Roller is designed to use when rolling corners, detail work, and patching. Use a Forward and Reverse rolling pattern when using this Hand Roller.

*Illustration 7*

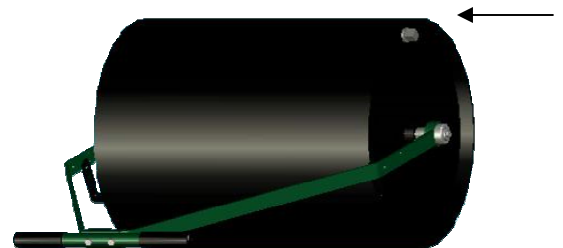
## Fill with Water

The 18" X 24" Hand Roller allows the user the ability to hand roll your clay courts with a desired compaction ability. Simply fill your Hand Roller with water.

Position the Roll so that the fill hole is at the top. Remove the brass square head Plug (20) from the side plate of the roll. Fill the roll with the desired amount of water for ideal compaction. Replace the brass plug.

*See Illustration 8*

*Illustration 8*



# Safety

Take precaution when operating all Hand Rollers. The Roller has a maximum weight of 320 lbs when filled with water. Keep your feet and hands away from the unit when the roller is in motion. The maximum filled weight could cause injury by mashing feet or hands. Also, keep fingers away from the scraper bar when Roller is in motion to avoid pinching.

# Specifications

Model Number	ROLHAN18
Rolling Width	24"
Overall Width	29"
Overall length	42"
Roller Section Dimensions	1 Roll (18" X 24")
Shipping Weight	2 Boxes: Roll @ 139 lbs Frame @ 16 lbs
Filled Weight	320 lbs
Material	All Steel Construction

# Proper Storage

Store the Hand Roller inside to prevent the unit from rusting. Empty the water from the roll before storing and remove the brass plug to allow unit to dry out on the inside. When emptying the water from the roller, it is normal for the water to have a rust color due to the all steel construction of the roll. Always empty the water from the roller off of the court surface. The rust color water may stain court surface.

## Maintenance

Keep the Hand Roller clean of tennis court surfacing by spraying the unit off with a garden hose. Make sure the scraper bar is free from debris and moves up and down with the springs providing tension.

## Warranty

### Limited Warranty

*Lee Tennis* warrants this product for one year from the date of purchase and will either repair or replace at its option, free of charge, any part or parts found to be defective in materials or workmanship. Transportation charges under this warranty must be paid by the purchaser unless return is requested by *Lee Tennis*.

This Warranty will not apply to any part which has become inoperative due to; misuse, accident, neglect, improper maintenance or alterations. The unit must be operated and maintained in accordance with the instructions furnished.

## Support Contact

If you need assistance with this product, contact Lee Tennis at 877-4-HAR-TRU or go online to [www.hartru.com](http://www.hartru.com) or contact your local distributor.

Our Mailing Address is:

Lee Tennis Court Products  
650 Peter Jefferson Parkway, Suite 300 B  
Charlottesville, VA 22911



650 Peter Jefferson Parkway, Suite 300 B, Charlottesville, VA 22911 1.877.442.7878 [www.hartru.com](http://www.hartru.com)